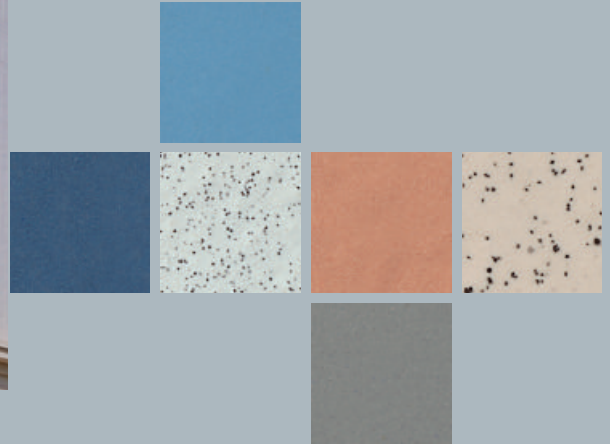




glazed



F I N I S H E S *of* P E R F E C T I O N

klaycoat



glazed

Glazed brick from Glen-Gery offers the means to choose from a virtually infinite array of colors for commercial applications. And the attractive features of the glazed product go beyond good looks due to the fact that it's impervious to liquids and gases. It's available in myriad colors, from brilliant white to deep blue.

GLAZED BRICK SIZES:

Modular	(3-5/8" x 2-1/4" x 7-5/8")
Standard	(3-5/8" x 2-1/4" x 8")
Engineer Modular	(3-5/8" x 2-3/4" x 7-5/8")
Engineer Standard	(3-5/8" x 2-3/4" x 8")
Econo	(3-5/8" x 3-5/8" x 7-5/8")
Norman	(3-5/8" x 2-1/4" x 11-5/8")
Utility	(3-5/8" x 3-5/8" x 11-5/8")

Glen-Gery glazed bricks are typically manufactured to conform to American Society for Testing and Materials (ASTM) Standard Specification for glazed brick, C 1405, Class Exterior, Grade S, Type 1.



Jefferson White (G10-8052) (custom color)

ADVANTAGES:

Impervious ceramic glazes are resistant to graffiti and abrasion.

Long-lasting, consistent and unfading colors.

Clear or colorless glazes can be applied to traditional brick.

Glen-Gery has the capability of applying clear glaze coating to traditional brick, creating the same unique glazed advantages to our standard brick colors.



Clear Glaze Golden Dawn (CGW27-28), Skyline (G419)



Buckwheat (G06-4072), Sapphire (G07-5124), Red Flashed Velour



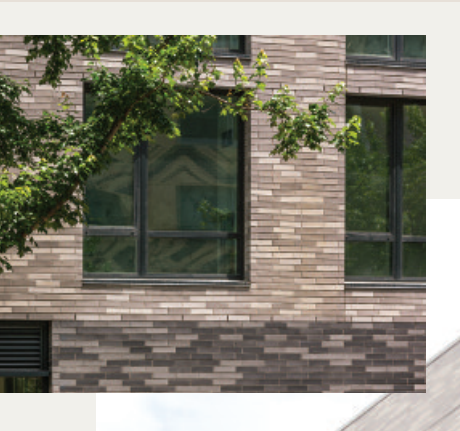
klaycoat

Klaycoat brick is created in scores of colors yielding spectacular results that architects and designers can utilize to great effect, enhancing many types of projects without going over budget. Most klaycoat colors are manufactured with a complementary body color where applicable.

KLAYCOAT BRICK SIZES:

Modular	(3-5/8" x 2-1/4" x 7-5/8")
Standard	(3-5/8" x 2-1/4" x 8")
Engineer Modular	(3-5/8" x 2-3/4" x 7-5/8")
Engineer Standard	(3-5/8" x 2-3/4" x 8")
Econo	(3-5/8" x 3-5/8" x 7-5/8")
Norman	(3-5/8" x 2-1/4" x 11-5/8")
Utility	(3-5/8" x 3-5/8" x 11-5/8")

Glen-Gery klaycoat brick are typically manufactured to meet ASTM C216, Grade SW, Type FBX except that a single stretcher face will have the finished texture and color specified. Brick requiring more than one finished face, such as brick requiring a finished head, must be ordered separately.



Light Grey Blend: **K12-3006, K12-3009, K12-3010** • Dark Grey Blend: **K12-3000, K12-3008, K11-9053** (custom colors)

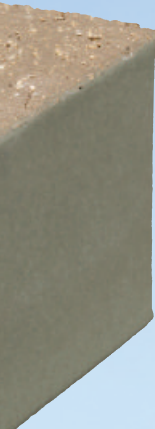


ADVANTAGES:

Allows water vapor to pass through the face of the brick, making it breathable.

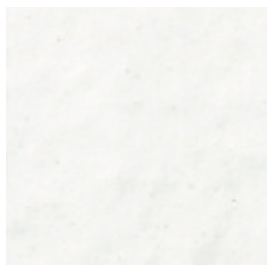
Colors and textures create a natural looking product.

Price point is competitive to traditional brick.

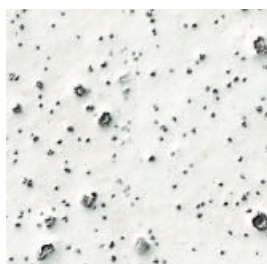


glazed

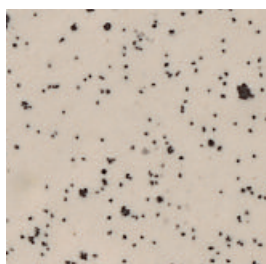
Glen-Gery has over 30 price list glazed colors and an infinite number of custom colors available. Please contact a Glen-Gery District Sales Manager to discuss your custom color needs.



White (G791)



White w/Speck (G725)



Country Pebble (G10-8081)



Quarry Grey (G10-8146)



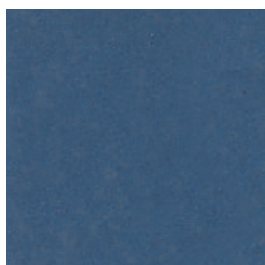
Pewter (G437)



Black (G701)



Iced Grey (G07-5216)



Bermuda Blue (G391)



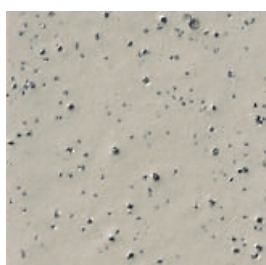
Sapphire (G07-5124)



Evergreen (G042)



Mustard (G06-4057)



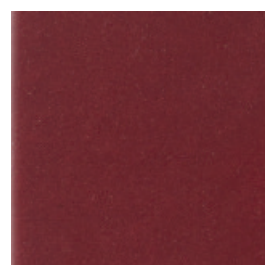
Light Grey w/Speck (G625)



Buckwheat (G06-4072)



Pumpkin (G07-5123)



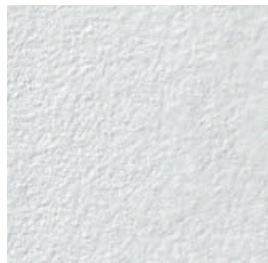
Ruby (G957)

Medium Blue (G418)

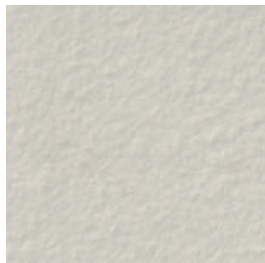


klaycoat

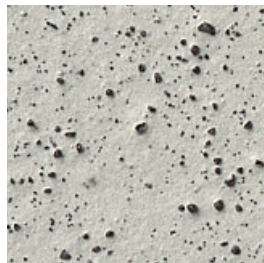
Our extensive line of klaycoats does not stop with our product list of nearly 30 price list colors. Have a color in mind? Need a match to an existing color? No problem—we can match and create any custom color, just give us a call!



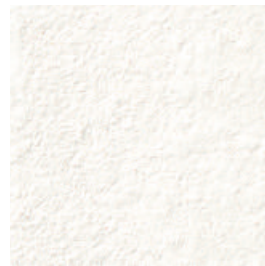
Seaspray (K13-3060)



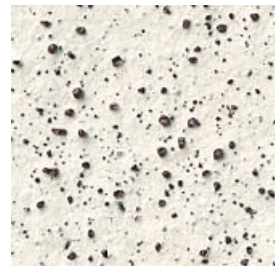
Aluminum (K10-8026)



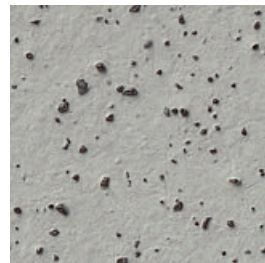
Light Pumice (K86-237)



Chalk White (K13-3056)



Dalmatian (K85-156)



Dark Pumice (K09-7053)



Graphite (K11-9047)

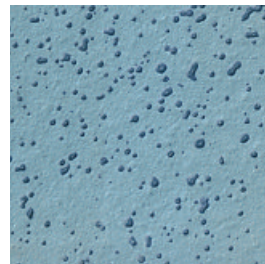
Blend: **K86-24, K86-27d, K87-26** (custom colors)
(3/4" thin brick precast application)



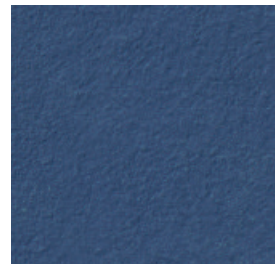
Arctic Mist (K13-3061)



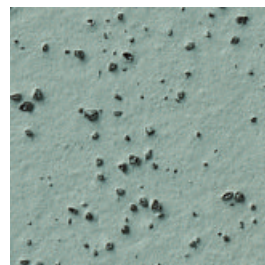
Iris (K13-3050)



Rain Drop Blue (K08-6025)



Denim (K13-3052)



Pepper Grass (K11-9069)



Seapines (K13-3055)



Maple (K10-8047)

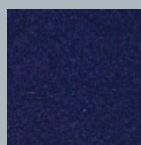
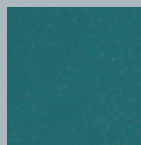
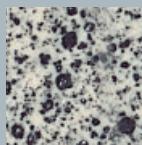
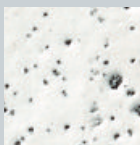


Crabapple (K13-3049)

FRONT COVER:

Glazed –
Jefferson White (G10-8052)
(custom color)

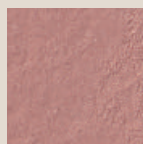
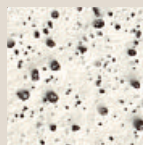
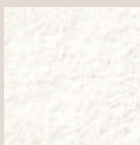
Klaycoat –
Aluminum (K10-8026),
Pelican Grey (K13-3059)



*White w/Speck (G725), Oyster White w/Speck (G825),
Light Pumice (K88-237), Dalmatian (K85-156)*



*Aluminum (K10-8026), Pelican Grey (K13-3059),
Sapphire (G07-5124)*



800.854.4753

info@glengery.com

All samples shown are a general depiction of color and texture. Due to printing limitations, color variation may occur. The final selection should be based on an actual sample. Slight variation can be expected in all klaycoat brick. Contact your Glen-Gery District Sales Manager for more information.